

Should You be Concerned?

If you answer “yes” to any of the following questions, talk to your physician or health care professional about a hereditary risk assessment.

- Do you or a family member have a history of cancer at an early age (i.e. before 50 years)?
- Do you have several family members with the same type of cancer?
- Do you or a relative have more than one type of cancer diagnosis?
- Do you have a rare cancer that has occurred in your family, such as male breast cancer?
- Do you or anyone in your family have a diagnosis of ovarian cancer?
- Do you have Eastern European Jewish ancestors?



Cancer Genetics

Payment for Service

Most medical plans and insurance providers will cover some or all of these services. Although genetic counseling does not require a physician’s referral, your insurance may require one. As a courtesy to you, we will file with your insurance. However, you are responsible for any deductible, coinsurance and uncovered services.

You or your physician may set up an appointment by calling 337-289-8400.



**Cancer Center
of Acadiana**

at Lafayette General

Burdin Riehl Center
1211 Coolidge Boulevard, Suite 100
Lafayette, Louisiana
NotANormalCancerCenter.com



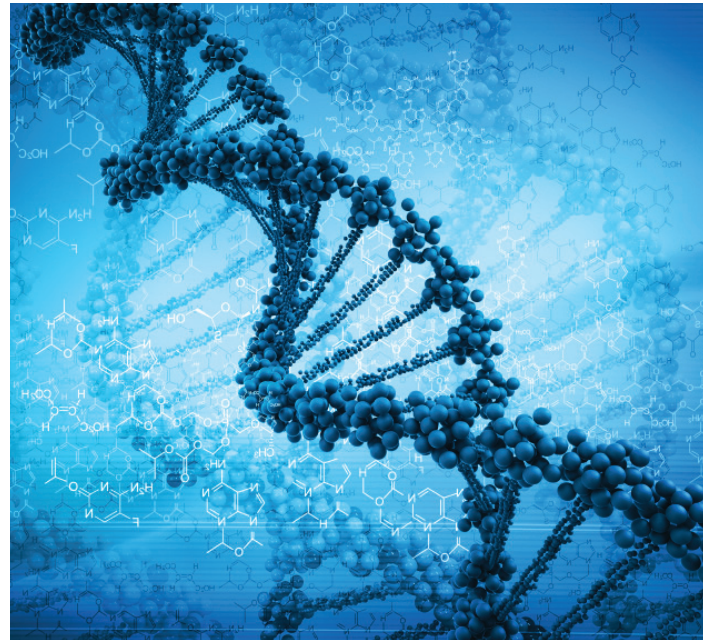
**Cancer Center
of Acadiana**

at Lafayette General

Are You or Your Family at Risk?

After looking at your family history, it may be possible to take advantage of today's technology of gene identification and testing to give you and your family a better understanding of your cancer risks.

Cancer is thought to be the result of many factors, such as genetics, environmental exposure and lifestyle. Although the majority of cancers are not inherited, recent research has found that inheritance can greatly increase the likelihood of some cancers. Researchers have discovered that there is more cancer in certain families due to an abnormal gene that is passed from generation to generation.



What Should You Expect?

You will be given a form to complete concerning your family health history. You will then meet with the counselor who will take a comprehensive family history and discuss with you the basics of cancer genetics, as well as any emotional, legal or ethical concerns you may have. The initial visit will take 1 to 1 ½ hours. Subsequent visits take less time.

If you wish to proceed with testing, an informed consent will be signed and a tube of blood will be drawn and sent to the appropriate laboratory. Since results cannot be given over the telephone, a return appointment will be made for disclosure of results.

The goal is to develop a personal risk management plan to prevent cancer development or to allow early detection while the disease is potentially curable.

Why Have Cancer Risk Counseling?

Peace of Mind

You or your family members may be worrying needlessly. With comprehensive cancer risk assessment and genetic counseling, the reality of your risk can be determined. If you are found to have the gene change that increases your risk of cancer, you can then use this knowledge to take measures to reduce the risk. This may relieve the uncertainty and anxiety you and your family have been living with.

Reducing Risks

Knowing you are at risk is invaluable in helping you and your health care provider manage your care. In most cases, there are 3 options for reducing cancer risks. These include increased surveillance, preventive medications and/or preventive surgery.

Who Will Counsel You?



Rebecca Donohue
MSN, FNP, AOCN,
APNG

Rebecca is an oncology nurse practitioner specifically trained in cancer genetics counseling. She has many years of

experience in oncology and will work directly with you and your family. Rebecca is the only Acadiana-based health care professional certified as an advanced practice nurse in genetics who is currently performing this service.

